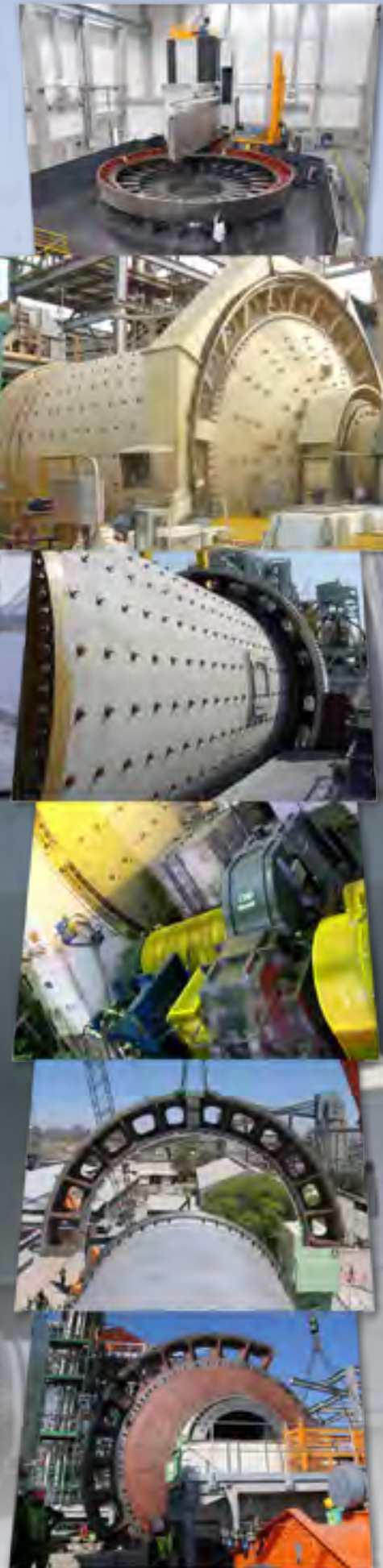




MINING INDUSTRY



>> One Single Partner for all Your Needs <<

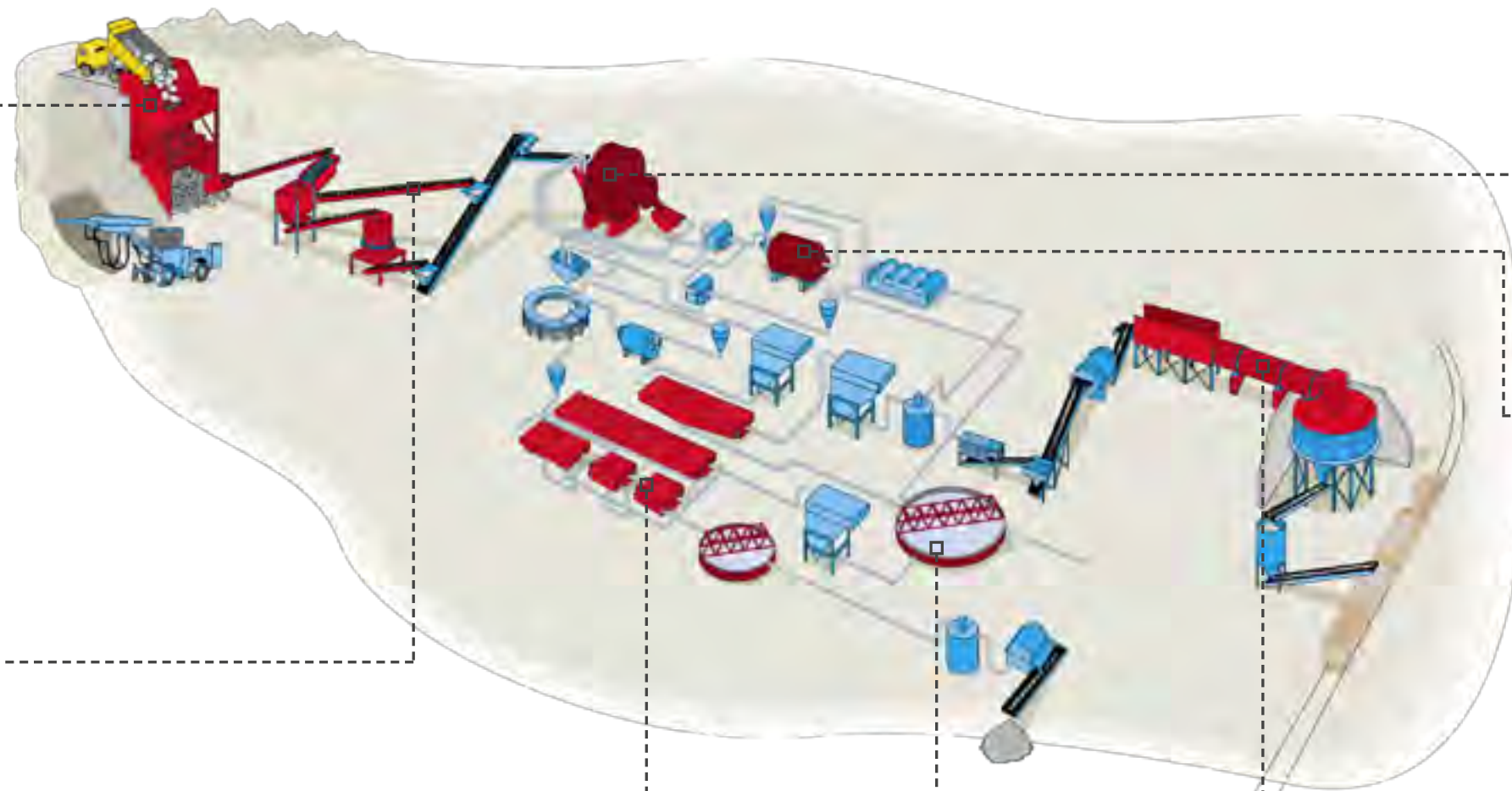
Gear \varnothing 13020 mm - in FerryNod[®] 320
Dual drive – 2x6750 kW



CRUSHING



MATERIAL HANDLING



GRINDING SAG MILL



GRINDING BALL MILL



FLOTATION



THICKENING



PYRO / SMELTING



CRUSHING

GYRATORY CRUSHERS

Spiders



CONE CRUSHERS

Spiral-bevel gear sets



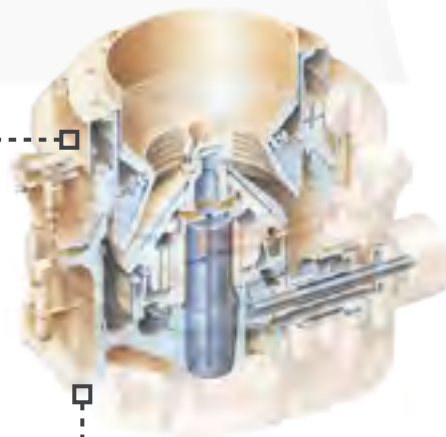
Eccentrics



Adjustment rings



Cone crusher body



Heads

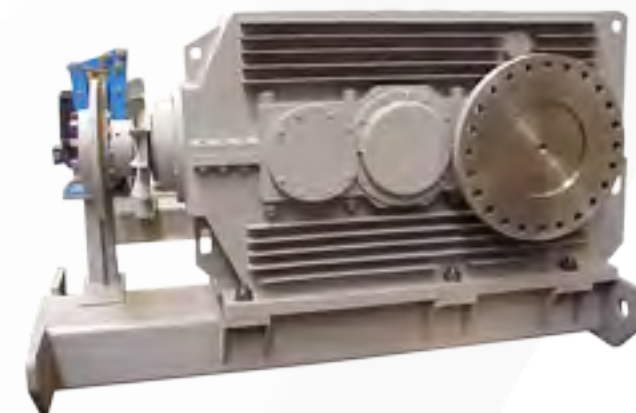


MATERIAL HANDLING

CONVEYORS



ERmaster[®] for belt conveyors



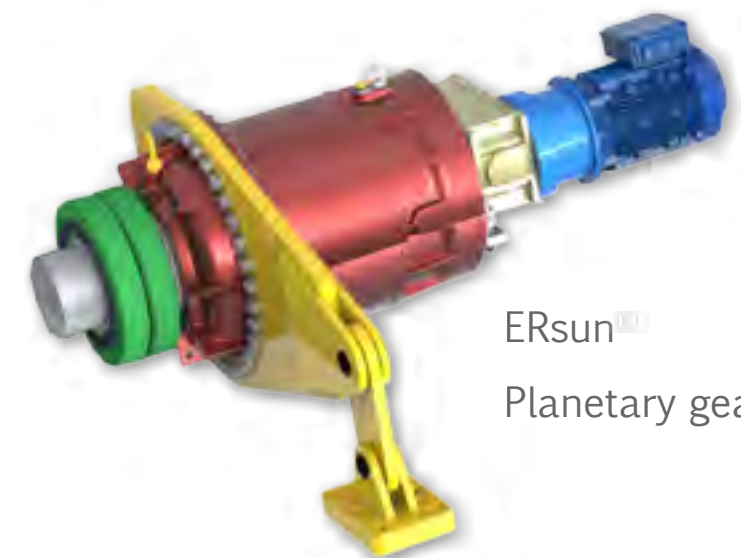
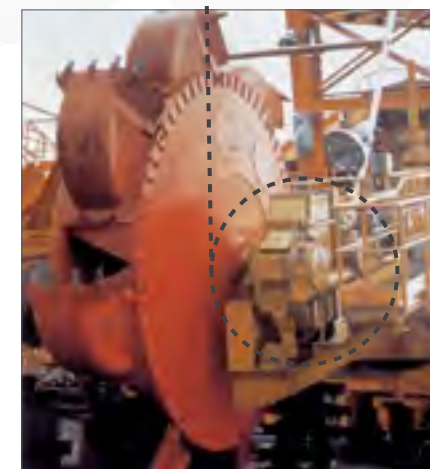
Worm gear drives



BUCKET WHEELS

Bucket wheel

Bogiflex[®] gearbox



ERsun[®]

Planetary gearbox

Mill shells – SAG



Mill shells – ball/rod



Ball Mill head in halves



SAG Mill Heads



Girth gears



Pinions



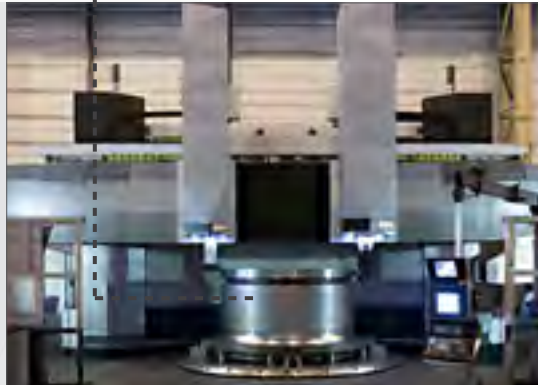
Pinions – sub-assembled



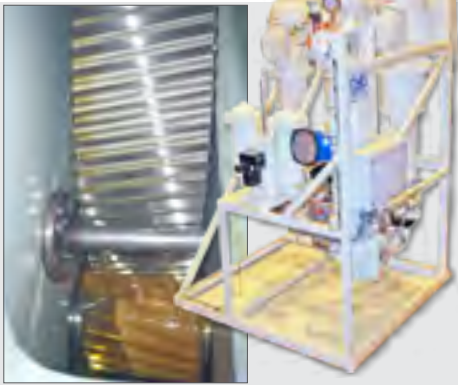
Bearings



Trunnions



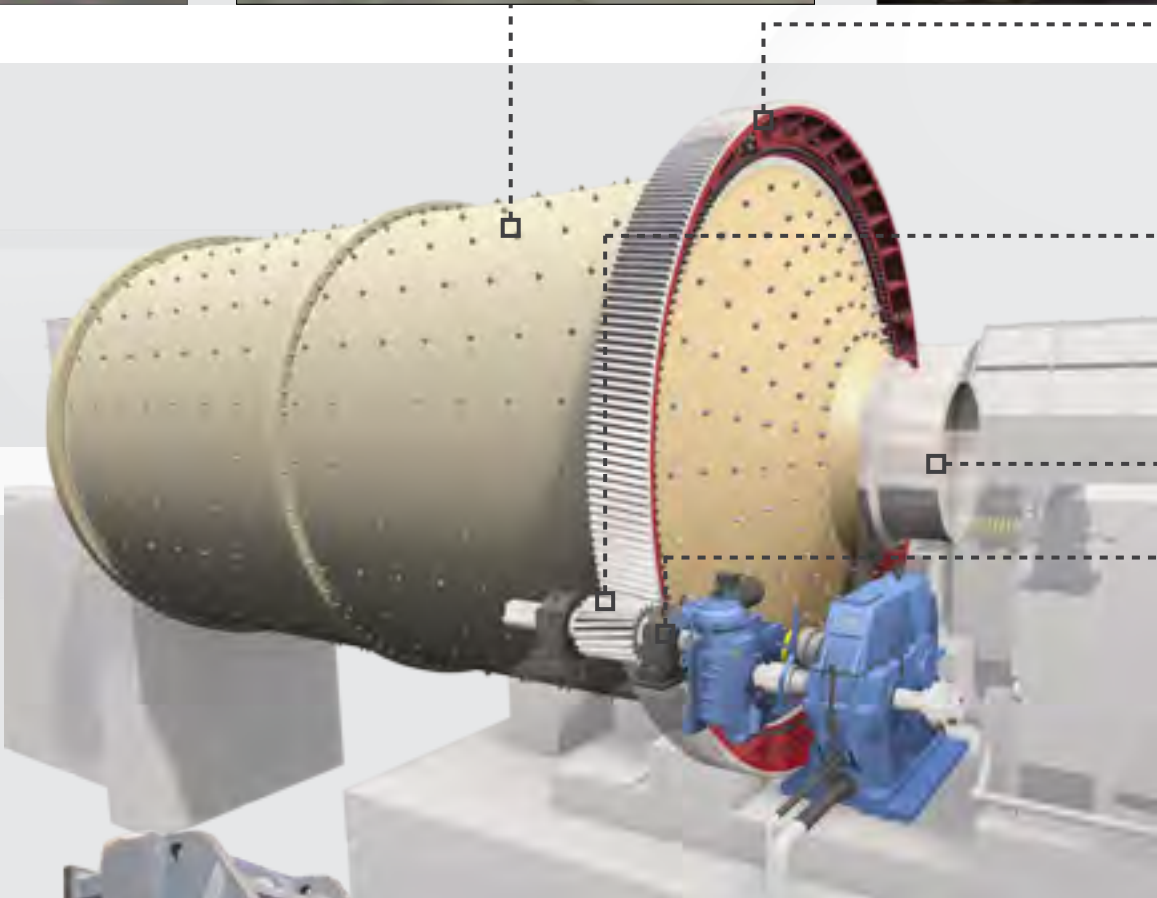
Lubrication units



Spring Coupling



Teeth Coupling

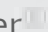


■ Compact lateral drives


Millrex 
Dual-pinion self-aligning drive
(2,3 & 4stages)

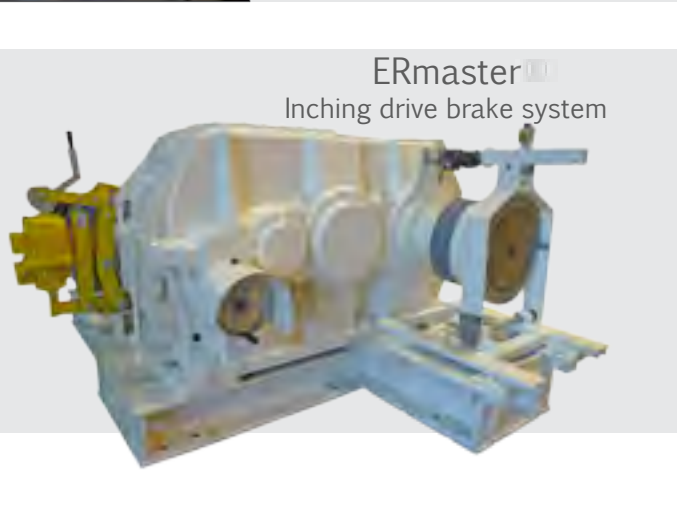


■ Parallel-shaft reducers

ERmaster 
Single and multi-stage reducers



ERmaster 
Inching drive brake system





Lime kiln



Rotary dryer



Shafted support rollers



Bogiflex KGD
self-aligning kiln
gear drive



Shells



ERmaster parallel-shaft
reducers



Support rings (cast steel or ductile iron)



Bogiflex "type BFT"
central drive

THICKENING AND CLARIFICATION

Worm gear drives (rotation/lift functions)



FLOTATION AND AGITATION



ERmaster[®] reducer units for high capacity cells

OUR ADDED VALUE



Test bench

- Multiple in-house test benches for product development and run-testing of custom gearboxes

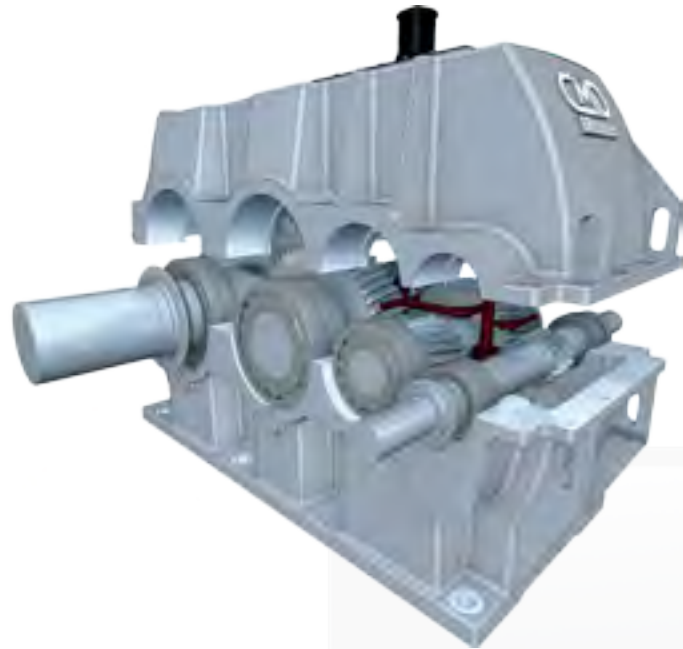
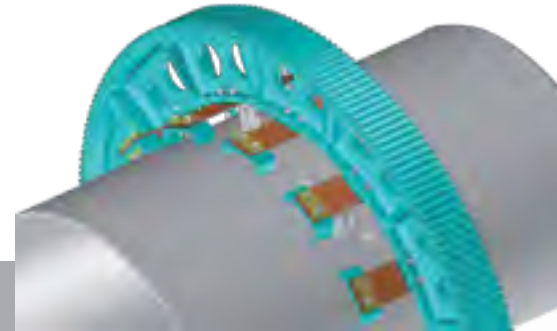


- Gear drive training center



OUR ADDED VALUE

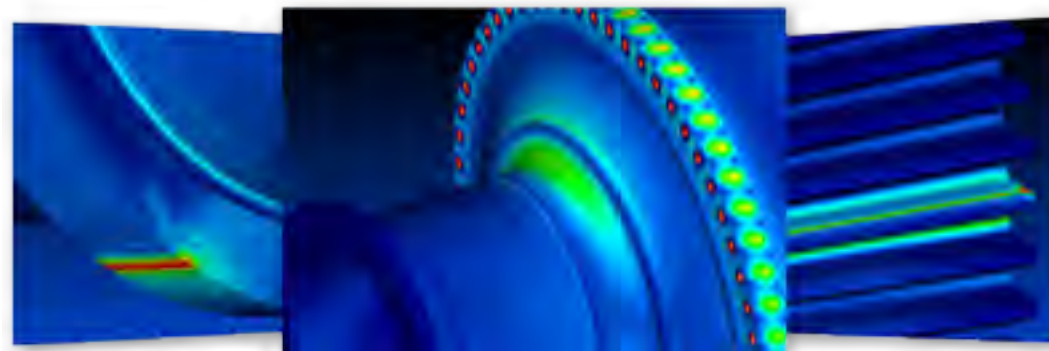
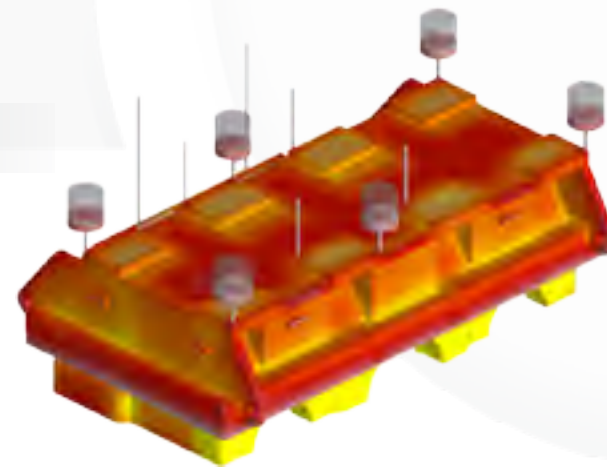
R&D - ENGINEERING



- Finite Element Analysis (FEA)
- Solidification and Flow Simulation Modeling
- Mechanical drive train design (open and enclosed gearing)
- Development of custom mechanical couplings
- Conversion of fabrications to castings (iron or steel)
- Technical staff of approx. 100 engineers/technicians
- Multiple patents each year

MATERIAL DEVELOPMENT

- Proprietary metal casting grades (FerryNod®, Ferrynox)
- Full metallurgical test lab



SERVICE

Over thirty qualified engineers and technicians within Groupe CIF are capable of travelling the world over for operations ranging from installation and commissioning of supplied products, to preventive maintenance and technical assessments.

- Reverse Engineering
- Supervision - Commissioning
- Monitoring
- Assessments/Recommendations
- Refurbishment of all types/brands of gearboxes





Compagnie Industrielle et Financière de Bussy

Vecqueville - BP 33
F-52301 JOINVILLE CEDEX
Tél. : +33 (0)3 25 94 04 24
www.legroupecif.com



March 2015



FERRY CAPITAIN
Usines de Bussy
Vecqueville - BP 33
F-52301 JOINVILLE
CEDEX
Tél. : +33 (0)3 25 94 04 24
www.ferrycaptain.fr



CMD
36, Avenue de l'Europe
Immeuble Étendard BP43
F-78142 VELIZY-VILLACOUBLAY
Tél. : +33 (0)1 34 63 12 24
www.cmdgears.com



FCMD
Schmiedestrasse 5
D - 45527 HATTINGEN
Tel. : +49 (0) 2324 686 520
www.fcmd-gmbh.de



FAD
17, Rue Pierre Bériot
BP 329
F-59723 DENAIN CEDEX
Tél. : +33 (0)3 27 21 44 00



ATELIERS ROCHE
15, Boulevard Marcelin
Berthelot - BP50
F-51052 REIMS CEDEX
Tél. : +33 (0)3 26 07 17 65
www.ateliersroche.fr
www.roche-meshmaker.com



ALC
55, Chaussée d'Antoing
B - 7500 TOURNAI
Tel. : +32(0) 69 88 41 41
www.alc.be